

ShinMaywa

WATER TANKER



■ Standard equipment

- Hose box ● Pump ● Ladder
- Suction and delivery hose ● Level gauge (tube type)
- Tank inside zinc spray coating



▲ 2-way cock

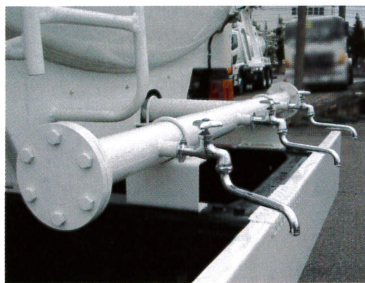


▲ Large manhole

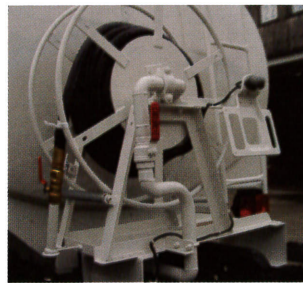
Optional equipment

- Tank inside epoxy coating
- Stainless steel piping
- Walk way
- Stainless steel tank
- Water tap
- Epoxy Coated Pump

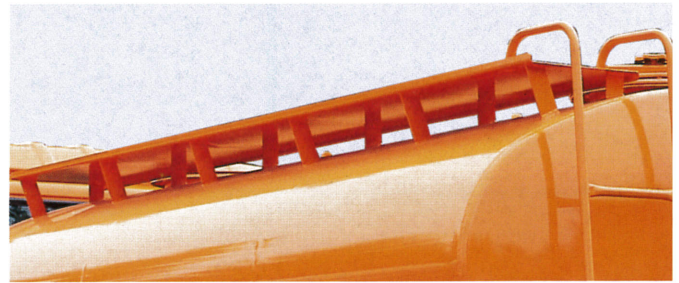
- Stainless steel pump
- Hose reel & hose



▲ Water tap

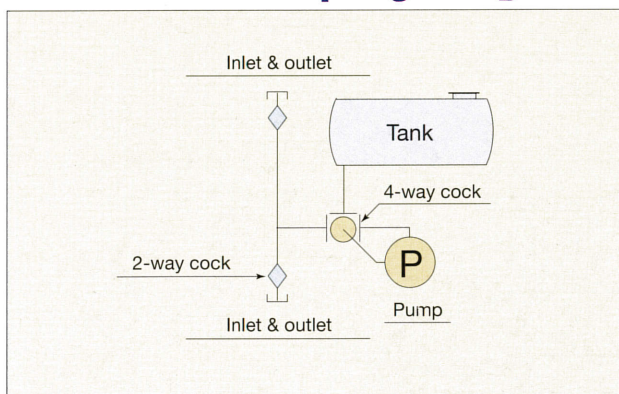


▲ Hose reel

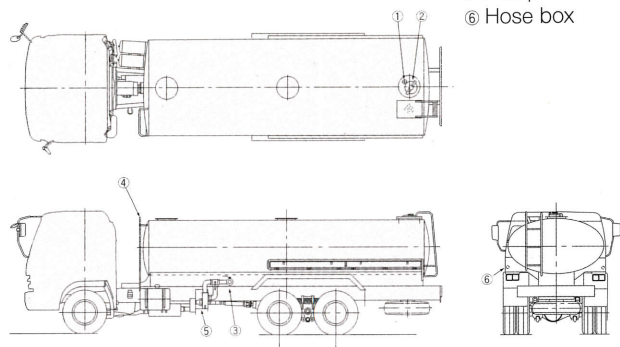


▲ Walk way

Standard Piping diagram



Structure



- ① Air vent
- ② Manhole & filling port
- ③ Inlet & outlet hose joint
- ④ Level gauge
- ⑤ Pump
- ⑥ Hose box

Specifications

Model		LW20-4	LW40-4	LW60-4	LW80-4	LW100-4	LW120-4	LW140-4	LW150-4	LW160-4
Tank capacity		2,000L	4,000L	6,000L	8,000L	10,000L	12,000L	14,000L	15,000L	16,000L
Pump type		Volute								
Pump performance	Capacity	550L/min at 2,450rpm				700L/min at 2,350rpm				
	Pressure	0.19 MPa (1.9kgf/cm ²)				0.18 MPa (1.8kgf/cm ²)				
	Total head	19m				18m				
Piping diameter		50mm		63mm		76mm				
Hose		Diameter 50mm×2,000mm×2pcs.		Diameter 63mm×3,000mm×2pcs.		Diameter 76mm×3,000mm×2pcs.				
Manhole		Diameter 400mm (Filling port diameter 235mm)								
Plate thickness	Shell plate	3.2mm				3.2/4.5mm				
	End plate	3.2mm						4.5mm		
	Baffle plate	3.2mm								
GVW(kg)		5,000~6,000	8,500~9,000	13,500~15,000	14,500~16,000	20,000~26,000	24,000~26,000	26,000~29,000		
Recommendable wheelbase(mm)		2,500~3,000	3,200~3,600	3,700~4,300	4,200~5,000	3,800~4,500	5,000~5,500			

The above mentioned figures are approximate.

- * Optional equipment are included in these photographs.
- * Specifications and dimensions are subject to change without notice.

ShinMaywa Industries, Ltd.

International Sales Dept.
Special Purpose Truck Div.

3-2-43, Shitte, Tsurumi-ku, Yokohama, 230-0003, Japan
Telephone : +81-45-575-5163
Facsimile : +81-45-575-9837
e-mail : overseas@shinmaywa.co.jp