

## COMPANY OVERVIEW





## Management philosophy

ShinMaywa Group will contribute to the overall well-being of humanity, bringing unstinting innovation for a stable society and positive living environment.

## Long-term vision

To respond to global society needs, we will be a true value co-creation company that advances urban, transportation and environmental infrastructures.



# Contributing to the overall well-being of humanity

With the ShinMaywa Group Philosophy as a basis, the ShinMaywa Group uses sound and transparent management to engage in business activities that are in harmony with society and the environment. The group's Sustainability management policy sets out eight perspectives on issues relating to Environmental, Social, and Corporate Governance (ESG) as part of the group's commitment to enhancing our corporate value sustainably and promoting Sustainability management\*.

The ShinMaywa Group works in a variety of business fields related to social infrastructure and is uniquely positioned to contribute to achieving the aims of the Sustainable Development Goals (SDGs). The group fulfills its social responsibilities by working to solve common issues shared by the company and society through its business activities.



The ShinMaywa Group supports the Sustainable Development Goals.

## Sustainability management policy

**E** Environmental   **S** Social   **G** Corporate Governance

### 1 Products / Services **E S G**

Tackle the challenge of solving social issues, create new value and contribute to the sustained development of society through the provision of safe, high-quality products and services

### 2 Global Society **S**

Contribute to the development of countries and cities by working to solve global problems related to urban, transportation and environmental infrastructure through our businesses

### 3 Global Environment **E**

Reduce our global environmental burden among our all processes in our corporate activities

### 4 Supply Chain **E S G**

Promote purchasing that helps the environment, human rights, and ethics, in conjunction with our business partners

### 5 Stakeholders **S G**

Increase the transparency of our management through the appropriate disclosure of information and sincere dialog, constructing a relationship of trust with all stakeholders

### 6 Governance and Risk Management **G**

Construct an effective governance system to prepare for threats to our corporate activities

### 7 Human Resources Training / Innovation **S**

Foster a sound organizational culture that respects diversity and generates new innovation

**Case study** Create a welcoming workplace in which everyone feels motivated to make a contribution

ShinMaywa Heartful, Ltd. is a special subsidiary established with the aim of providing employment opportunities to people with disabilities. It is contributing to the operational efficiency of ShinMaywa Group through the digitalization of documents and a variety of printing operations. ShinMaywa Heartful has facilitated the creation of working environments in which employees with disabilities can thrive. ShinMaywa Heartful helps these employees to maximize their potential, secure stable employment for a long period of time and make an active contribution to the ShinMaywa Group.

As part of our efforts to foster an environment in which employees feel motivated to make an active contribution, the ShinMaywa Group also has an in-house awards system and holds regular competitions in which employees can test the skills that they hone on a daily basis.



An office at ShinMaywa Heartful, Ltd.

### 8 Local Communities **S**

Actively interact with local communities to contribute to our co-existence and their development

**Case study** Participation in JICA's J-PRISM project

The ShinMaywa Group has supported the Japan International Cooperation Agency (JICA) in the provision of training as part of the Project for Promotion of Regional Initiative on Solid Waste Management (J-PRISM) since 2011. Through training on basic operations and safety when working with refuse compactors, the group has supported government and municipal workers in the Pacific region, Asia and Latin America in their efforts to improve their institutional waste management capacity. In 2015, the group also participated in JICA's grassroots project Establishing Separate Collection System of Household Waste in Cooperation with Public and Private Sectors Based on a New 3Rs (Reduce, Reuse, Recycle and Return) Concept. On-site training on the operation of ShinMaywa refuse compactors was provided in Honiara City in the Solomon Islands. (These activities were suspended in 2020 as a result of the COVID-19 pandemic.)



On-site training in Honiara City

\* Sustainability management: The term for business management as a whole that achieves sustainable growth with a view to the long term

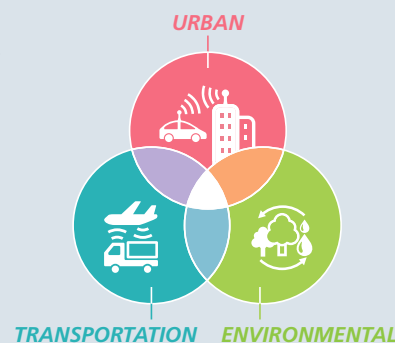


## Our businesses

# Building on over 100 years of history to contribute to the overall well-being of humanity, as a true value-co-creation company advancing innovation and technology

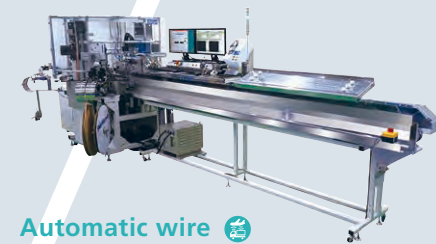
The ShinMaywa story begins with the production of aircraft in 1920. Since then, the company's desire to contribute to society through manufacturing has seen it create various products and services expanding across a diverse spectrum of business areas. Today, ShinMaywa's business activities are centered on five businesses: Special purpose trucks, Parking systems, Industrial machinery and environmental systems, Fluid and Aircraft. ShinMaywa prides itself on collaborating with its group companies and partners in Japan and around the world to provide integrated solutions that cover development, production, sales and maintenance. ShinMaywa Group supports the creation of a stable society and positive living environment. It will continue tackle the challenge of creating new value that provides safer, more convenient lifestyles through social infrastructure in urban, transportation and environmental fields.

\*Icons indicate the applicable business area for each product.



## Safe, smooth, eco-friendly transportation

ShinMaywa grasps evolutions in the logistics, automobile, and aviation industries to provide products and services that enable the safe, seamless movement of people and goods.



**Vacuum driers for secondary batteries for automobiles** 🚗🔋  
These devices play an essential role in the production of lithium-ion secondary batteries for electric vehicles, contributing to the realization of a carbon-free society.



**Thin film coating systems** 🚗  
These devices contribute to increases in automobile performance through uses such as the application of reflective and protective film coatings to head lamps on automobiles.

**Automatic wire terminating machines** 🚗  
These devices process wires for wire harnesses found in automobiles and home appliances. ShinMaywa's high-speed, high-precision processing technology is improving productivity in this area.



## Main wing spar for the Boeing 787 Dreamliner

Through the manufacture of a main wing spar made principally from lightweight and strong composite materials, ShinMaywa contributed to improving the fuel efficiency of the Boeing 787, reducing the aircraft's environmental load.



## Trailers

These trailers enable high-capacity transportation, reducing their environmental footprint and helping to alleviate driver shortages.



## Tail lifts: Tail Gate Lifter series

Tail lifts save manual labor and increase efficiency when loading and unloading cargo.



## Supporting a comfortable living environment through water infrastructure

ShinMaywa produces a range of equipment involved in water treatment, contributing to the cleanliness and circulation of essential water resources.

## Air foil bearing turbo blowers: TurboMAX

Turbo blowers play an indispensable role in the treatment of wastewater. TurboMAX provides energy efficiency, low maintenance, compactness and quietness.



## Submersible pumps

Submersible pumps transport wastewater in treatment facilities and pumping stations. The CNWX series combines high efficiency with impressive pass-through performance.

## Submersible mixers

Submersible mixers contribute to advanced wastewater treatment through uniform mixing that prevents settling of sludge while also providing impressive energy efficiency and durability.



# URBAN

Draw out the potential of mobility through connection and contribute to the creation of secure, convenient, and smart urban infrastructure



## Diverse solutions to make effective use of space

### Elevator type car parking system: ELEPARK

ShinMaywa offers a range of car parking systems to meet each building's unique parking needs. ELEPARK exemplifies this track record by providing practical, high-quality solutions that improve urban parking in cities all over the world through their outstanding safety, reliability and environmental performance.



## Supporting on-site work as a foundation for urban development

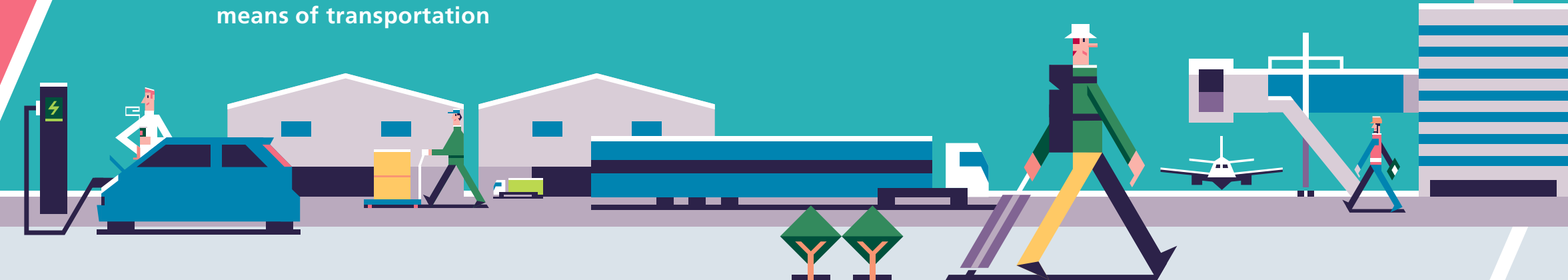
### Rear dump bodies and tipping gear

Rear dump bodies and tipping gear are used in locations such as construction sites to transport sand, crushed stone and other materials. ShinMaywa's dump trucks feature proprietary hoist mechanisms built to withstand the harshest working conditions, and the company supports urban and economic development around the world through this rationalization of transportation.



# TRANSPORTATION

Contribute to the construction of an environmentally-friendly, safe and smooth transportation system by promoting the automation of means of transportation



## Supporting smart airport operation

### Aircraft passenger boarding bridges: PAXWAY™

ShinMaywa's aircraft passenger boarding bridges are deployed in airports around the world and provide smooth embarking and disembarking for passengers. ShinMaywa has contributed to solving issues faced by airport operators through innovations such as using AI technology to work towards the deployment of the world's first Full-automatic docking system.



## Supporting rescue teams through world-leading performance

### US-2 STOL search and rescue amphibians

Combining the characteristics of aircraft and boats, the US-2 is the world's only aircraft capable of takeoff and landing on rough seas with a wave height of 3m. These aircraft are used by Japan's Maritime Self-Defense Force and have contributed to lifesaving missions at sea and on remote islands. Amidst a rise in large-scale forest fires, the US-2 is also expected to play a vital role through deployment as a fire-fighting amphibian.



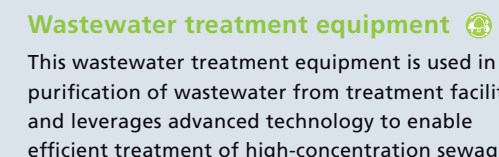
## Sanitary, efficient waste treatment

ShinMaywa has a long history of making products used to collect and transport waste, contributing to the creation of cleaner cities and environmentally-friendly circular economies.



### Refuse storage and discharger: DUST DRUM

This equipment provides effective and sanitary storage and handling of refuse generated by residential apartments and commercial facilities.



### Wastewater treatment equipment

This wastewater treatment equipment is used in the purification of wastewater from treatment facilities and leverages advanced technology to enable efficient treatment of high-concentration sewage.



### Refuse compactors

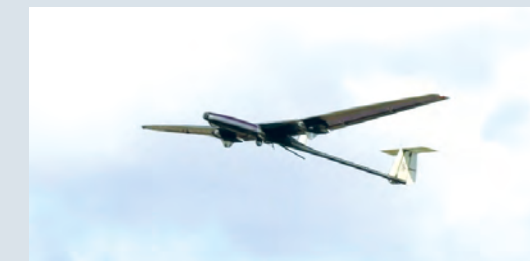
ShinMaywa's refuse compactors combine outstanding carrying capacity with excellent safety during operation and driving.



Contribute to environmental conservation and the effective use of resources for a recycling-based economy by promoting the optimization of waste and domestic waste water treatment systems



## Exploring new frontiers in aircraft technology



### The fixed-wing unmanned aerial vehicle (UAV) XU-S

ShinMaywa has developed the fixed-wing unmanned aerial vehicle (UAV) XU-S, which utilizes lithium-ion polymer (LiPo) batteries to achieve emission-free long-distance flying. It is intended for deployment in fields such as environmental observation, monitoring, and telecommunications.



## Financial Highlights (Consolidated)

(Thousands of U.S. dollars)

	FY2019	FY2020	FY2021	FY2022	FY2023
Net Sales	2,084,691	1,884,922	1,777,242	1,680,414	1,702,390

(Thousands of U.S. dollars)

	FY2019	FY2020	FY2021	FY2022	FY2023
Operating profit	117,762	94,406	86,639	69,356	77,917

(Thousands of U.S. dollars)

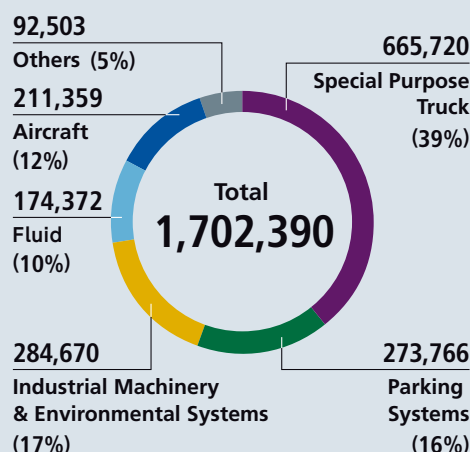
	FY2019	FY2020	FY2021	FY2022	FY2023
Ordinary profit	113,537	100,740	96,900	73,900	80,174

(Thousands of U.S. dollars)

	FY2019	FY2020	FY2021	FY2022	FY2023
Profit attributable to owners of parent	67,693	49,436	56,617	54,580	48,210

## Net sales by segment (As of March 31, 2024)

(Thousands of U.S. dollars)



Numbers in parenthesis show proportions of total sales by segment (rounded).

## U.S. Dollar Amounts

	FY2019	FY2020	FY2021	FY2022	FY2023
U.S. per \$ 1.00 (yen)	109	111	122	134	151

## Main businesses by segment

### Special purpose truck segment

Manufacturing and maintenance of dump trucks, tail lifts, refuse compactors, trailers and other special purpose trucks and related components, as well as forestry equipment

### Parking systems segment

Manufacturing, maintenance and repair of car parking systems and aircraft passenger boarding bridges

### Industrial machinery & environmental systems segment

Manufacturing and maintenance of automatic wire processors, thin film coating systems, and environmental systems

### Fluid Segment

Manufacturing and maintenance of water treatment equipment

### Aircraft segment

Manufacturing and maintenance of amphibian aircraft and manufacturing of commercial aircraft components

### Others

Construction, IT-related business, real estate and temporary personnel services

## Corporate Facts

Corporate Name	ShinMaywa Industries, Ltd.
Founded	November 5, 1949
President	Tatsuyuki Isogawa
Head Office	1-1 Shinmeiwa-cho, Takarazuka, Hyogo, Japan
Paid-up Capital	15,981,967,991 yen (as of March 31, 2024)
Number of Employees	Consolidated 6,453 Non-consolidated 3,264 (as of March 31, 2024)

Website



Facebook



Instagram



YouTube



## Global Network

### North America

ShinMaywa (America), Ltd.  
ShinMaywa (California), Ltd.  
ShinMaywa Mexico S.A. de C.V.

### Southeast Asia

ShinMaywa Aerobridge Malaysia Sdn. Bhd.  
ShinMaywa (Asia) Pte. Ltd.  
ShinMaywa (Bangkok) Co., Ltd.  
ShinMaywa Philippines, Inc.  
Thai ShinMaywa Co., Ltd.

### East Asia

KOREA VACUUM LIMITED  
ShinMaywa (Shanghai) High-Tech Machinery Co., Ltd.  
ShinMaywa (Shanghai) Trading Co., Ltd.  
ShinMaywa (Chongqing) Environmental Solutions Co., Ltd.  
Taiwan ShinMaywa Industries Co., Ltd.  
TurboMAX Co., Ltd.  
Changzhou TurboMAX Environment Technology Co., Ltd.  
TurboMAX (ChangZhou) Technology Co., Ltd.  
TurboMAX India Private Limited

Contact details and the latest information regarding ShinMaywa Group's global network:

