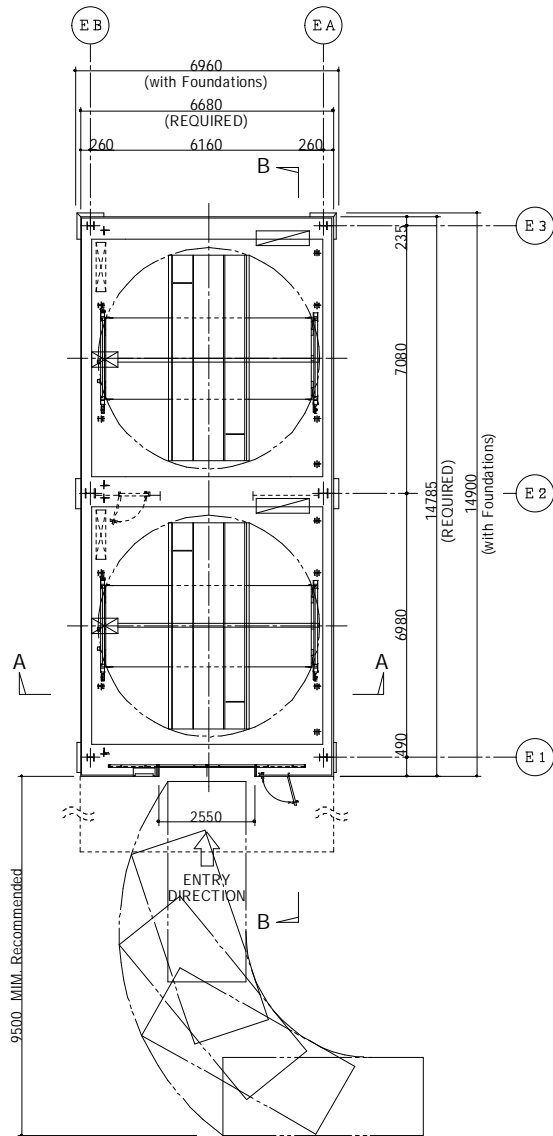
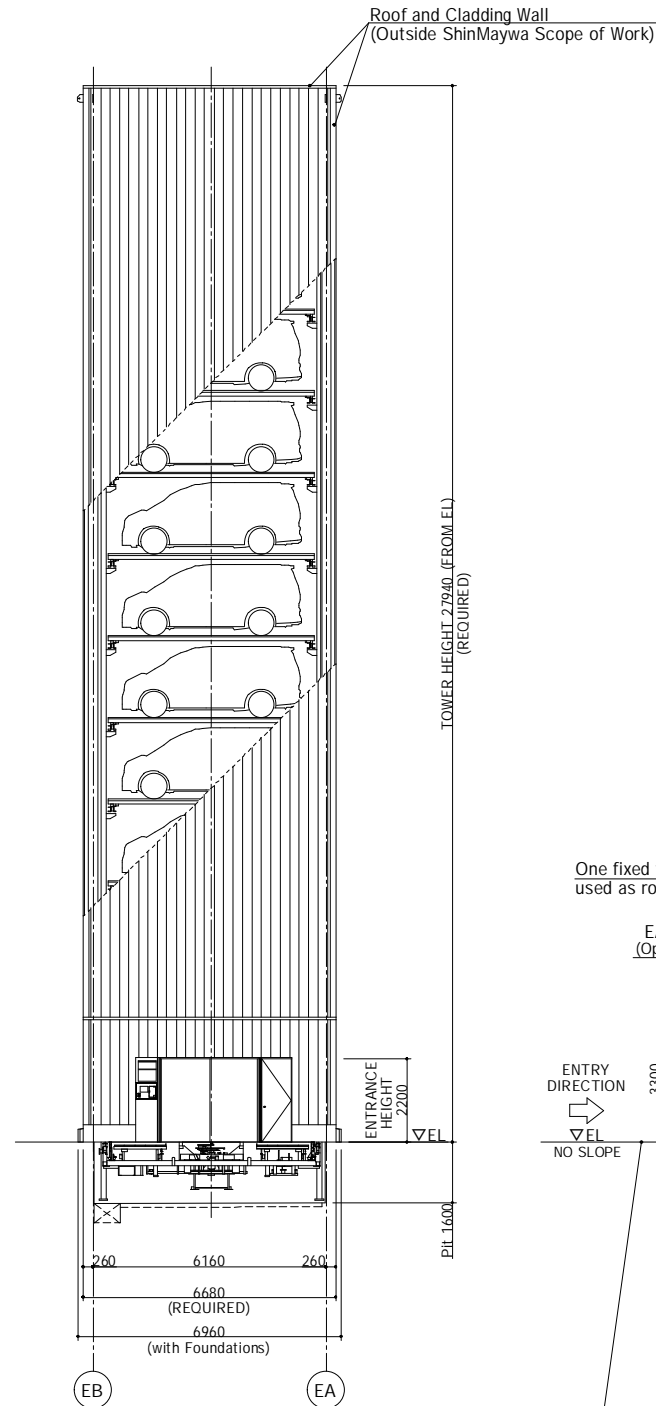


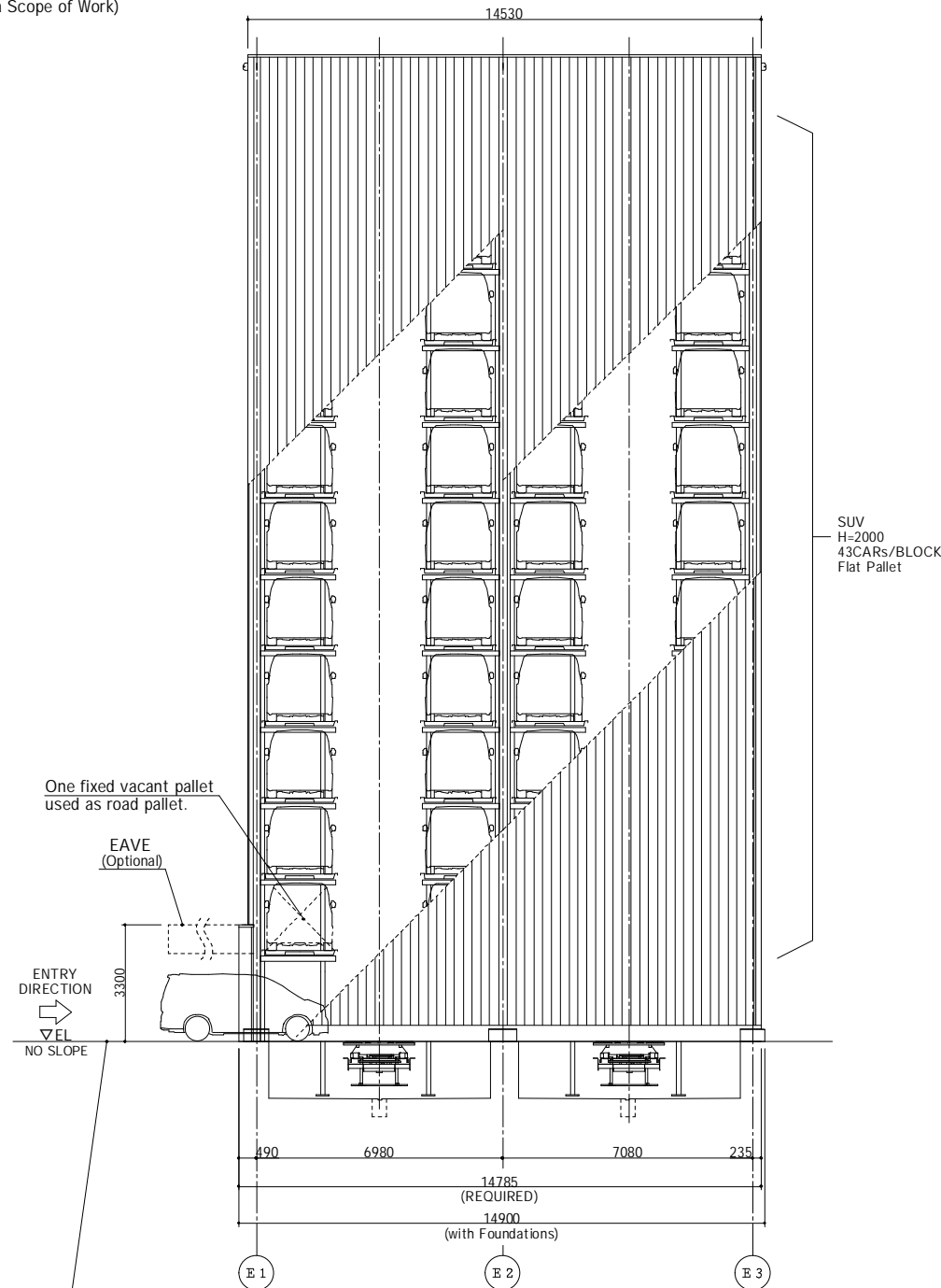
UPPER FLOOR PLAN S = 1/100



ENTRANCE-FLOOR (EL) LAYOUT PLAN S = 1/100



A-A SECTION S = 1/100



B-B SECTION S = 1/100

PRODUCT SPECIFICATION	
NAME	ELEPARK (Elevator Type Parking System)
MODEL	EW2AXH-21T1* AXH-22T1-EFP(H43)
CAPACITY	TOTAL: 43 CARS /BLOCK
	SUV 43 CARS /BLOCK
<b>CAR DIMENSION</b>	
MAX. LENGTH	5300mm
MAX. WIDTH	2050mm*
MAX. HEIGHT	2000mm
MAX. WEIGHT	2400kg
TIRE OUTER DIMENSION	2050mm
MIN. GROUND CLEARANCE	90mm
*Side-view mirrors must be folded	
Side-view Mirrors folded	MAX. WIDTH
TIRE OUTER DIMENSION	MAX. LENGTH
	MIN. GROUND CLEARANCE
	MAX. HEIGHT
Protruding Front mirrors	Antennas
Protruding Accessories	Cargo on top
	Protruding Rear mirrors
	Protruding Mufflers or hooks
<Caution>	
1. Cars with protruding parts or accessories cannot be stored.	
2. Be sure to fold the side-view mirrors when parking.	
DIRECTION	FORWARD ENTRY, FORWARD EXIT
OPERATION METHOD	SMART CARD, TOUCHSCREEN
POWER SUPPLY CAPACITY	64 kVA /BLOCK (TOTAL HEIGHT ≤ 46.05m)
<b>POWER</b>	
ASCENT AND DESCENT	AC3 φ 200V 18.5 kW x 2/BLOCK
SLIDE AND ROTATE	1.1 kW x 2/BLOCK
LIFT	3.7 kW x 2/BLOCK
CONTROL	VECTOR INVERTER
<b>SPEED</b>	
ASCENT AND DESCENT	60-120m/min (AUTOMATIC VARIABLE SPEED)
SLIDE	40m/min
ROTATION	5.6 rpm
<b>LIGHTING</b>	
GROUND FLOOR: LED TUBE x 8/BLOCK	
UPPER FLOOR: MAINTENANCE LIGHTS	
<b>AUTO DOOR</b>	
SYSTEM	2 PANELS CENTER-OPEN SLIDING DOOR/BLOCK
DIMENSION	WIDTH: 2550mm x HEIGHT: 2200mm
MATERIAL	STEEL (COATING FINISHING)

<NOTE>  
 1) Specifications are based on Japan Standard or ShinMaywa Standard.  
 2) This is the concept drawing for reference use only.  
 Please contact us for further information and optional specification (eave length etc.)  
 3) A transformer must be installed for use with local power grid.  
 (Outside ShinMaywa scope of work)

ShinMaywa  
**REFERENCE  
 DRAWING**  
 Recommended Use:  
 SUPERCAR  
 CAD\_EW2AXH-21T1AXH-22T1-EFP(H43)