



Japan Mobility Show

# TOHO STEERING AXLE TRAILERS

STEERING AXLE DROP BED SEMI-TRAILER (reference exhibit)  
STEERING AXLE POLE-TRAILER

## TOHO STEERING AXLE TRAILERS



16WHEELS STEERING AXLE DROP BED SEMI-TRAILER (reference exhibit)



STEERING AXLE POLE-TRAILER



**TOHO CAR CORPORATION**

# TOHO CAR HYDRAULIC STEERING AXLE TRAILERS

Recently, the demand for trailers with steering axles has increased.



## STEERING AXLE DROP BED SEMI -TRAILER

2-axle 16-wheel semi trailer with automatic ramps

### TOHO HYDRAULIC STEERING (DROP BED SEMI-TRAILER)

- ① The stelling angle 13 degrees left and right.
- ② Remote control and safe operation.
- ③ Steering is hydraulically operated by an electric power unit.



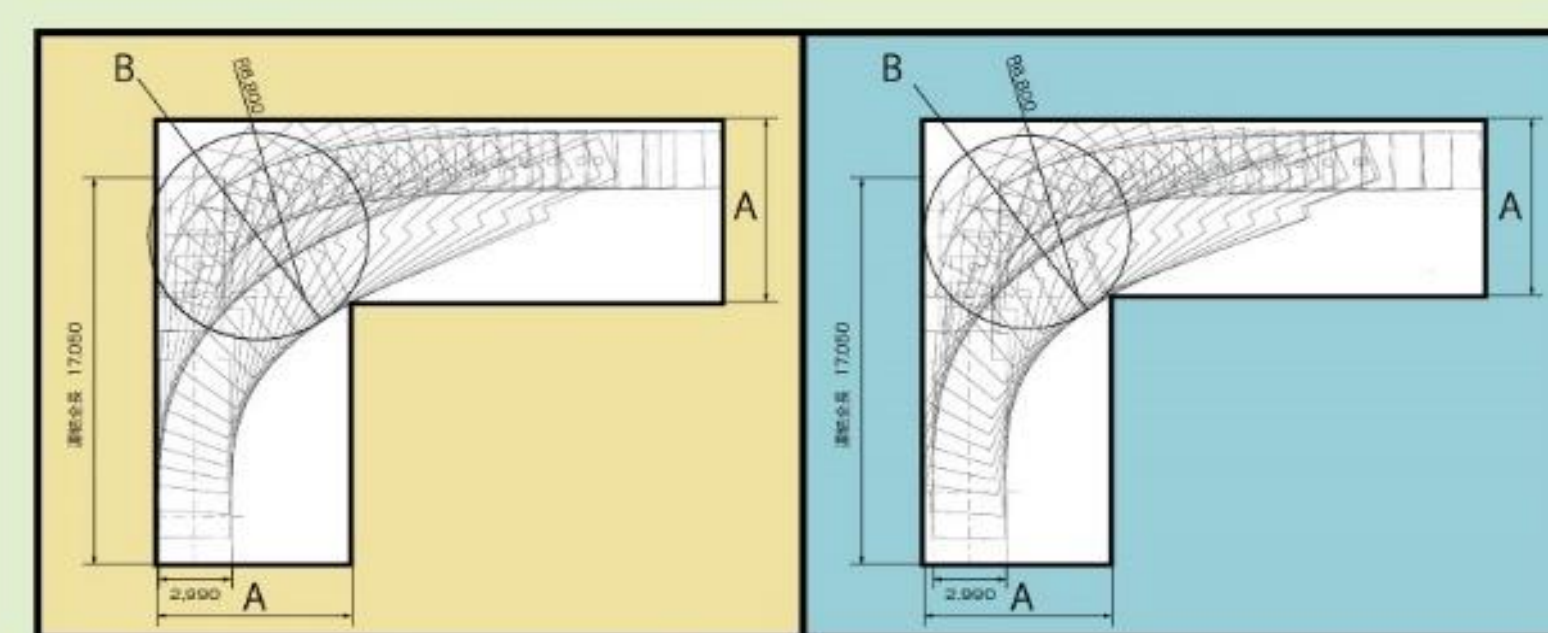
The stelling angle 13°



### Stelling axle improves turning performance

The table on the right shows the comparison results between equipped steering and no steering axle.

Road width A is  $\Delta 400\text{mm}$ , and road width Bed is  $\Delta 700\text{mm}$ .



	(mm)		(mm)	
	steering	without	equipped	difference
Overall length	17,050mm			
Overall width	2,990mm	8,200	7,800	$\Delta 400$
Minimum turning width	6,800mm	9,200	8,500	$\Delta 700$

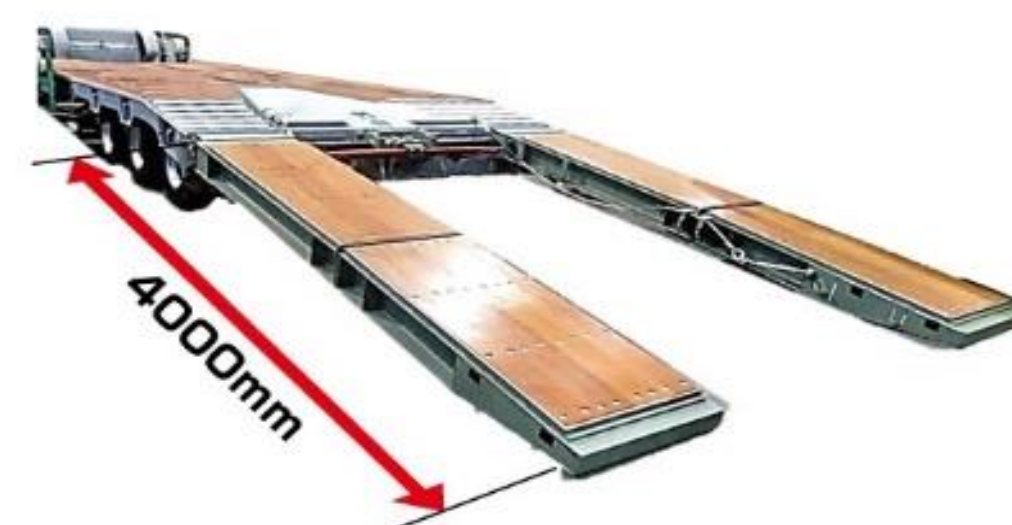
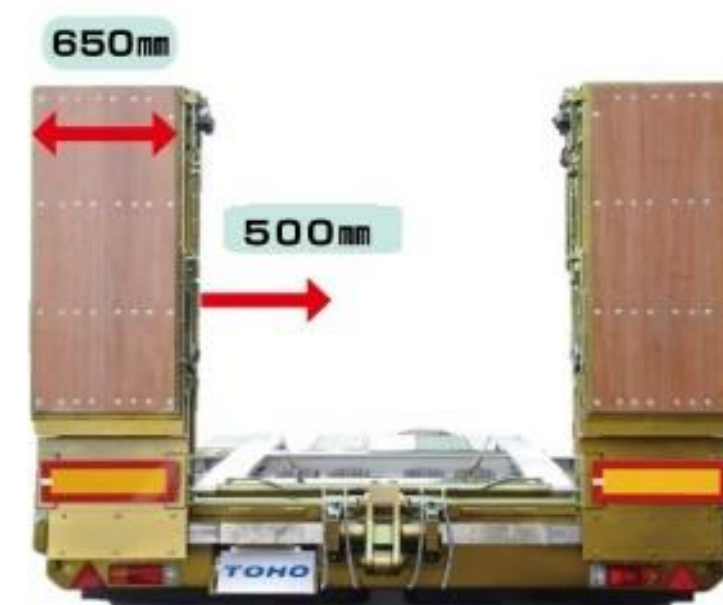


Remote controller



### Original automatic ramps

Our original automatic ramps can be operated by remote control. Even when an electric winch is installed, it can be operated with a single remote control. width is 650mm and length is 4000mm.



TOHO Original Automatic Ramps			
Applicable trailer width(mm)	2,990~3,200	Material	apiton t40
Load capacity(kg)	38,000	Weight(kg)	1830 (width2990mm)
Operating system	hydraulic power package		1850 (width3190mm)
Shape	2-step fold	Operation	toggle switch
Slide (mm)	500	open	: 25sec
Width(mm)	650	Operating time (seconds)	folding :19sec
Total length(mm)	4,000	Slide	: 10sec

## STEERING AXLE POLE-TRAILER

### TOHO HYDRAULIC STEERING AXLE POLE-TRAILER

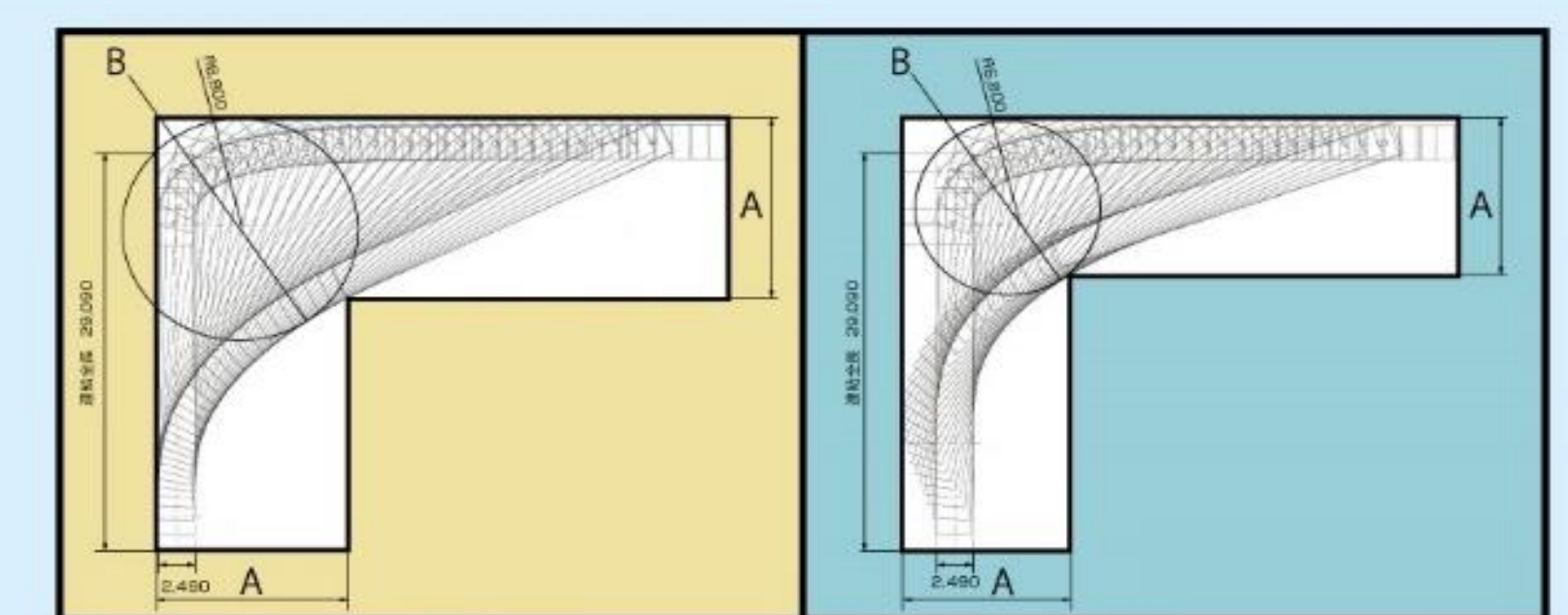
- ① Maximum steering angle is 35°
- ② Steering is possible with a wireless remote control, allowing you to operate while checking safety.
- ③ The steering angle can be adjusted according to the road and work location conditions.
- ④ Hydraulic operation by independent engine
- ⑤ Max pay road 21t



### Steering axle improves turning performance

The table on the right shows the comparison results between equipped steering and no steering axle.

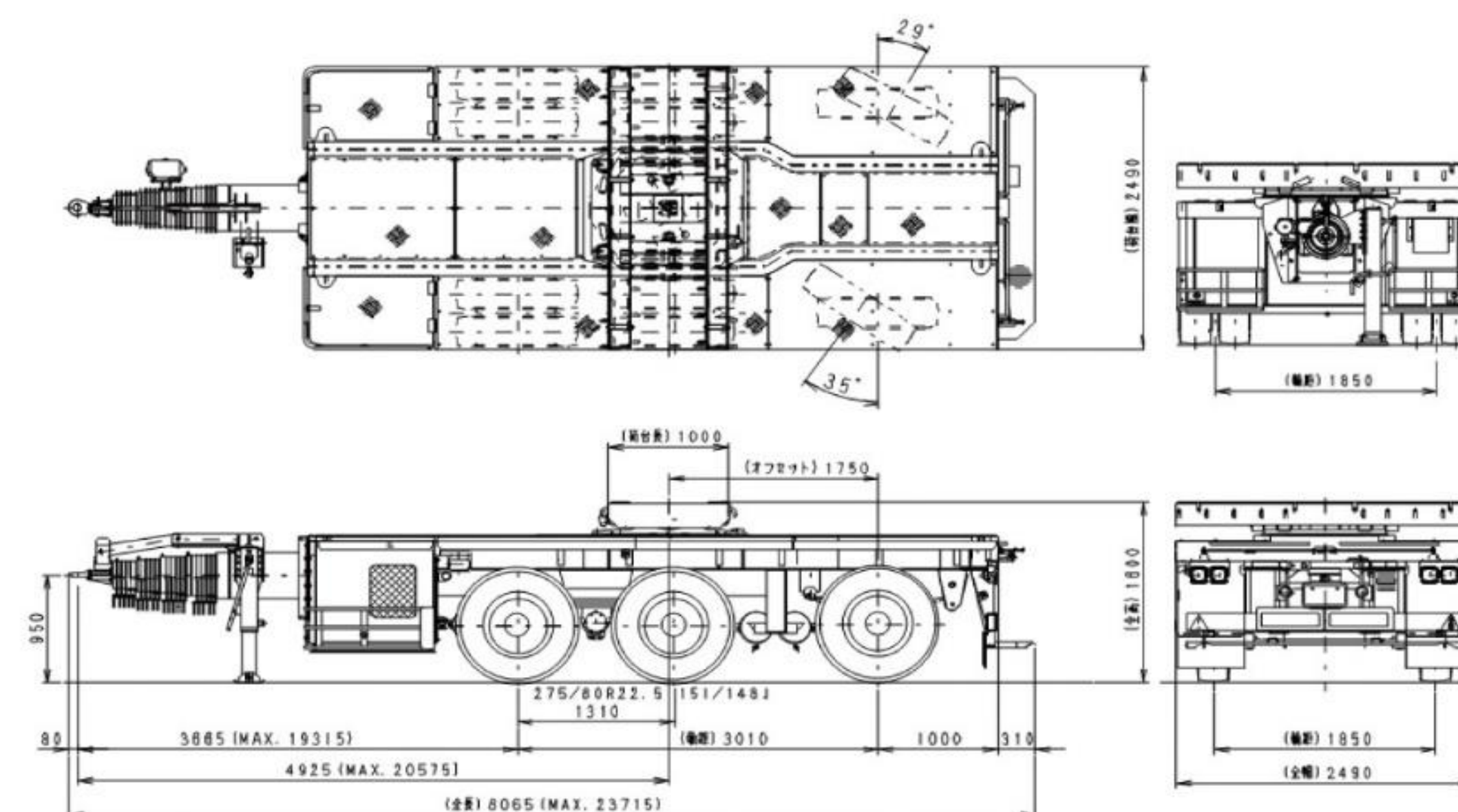
Road width A is  $\Delta 1700\text{mm}$ , and road width Bed is  $\Delta 3600\text{mm}$ . This reduces the risk of entering narrow roads or getting caught.



	(mm)		(mm)	
	Steering	without	equipped	difference
Overall length	29,090mm			
Overall width	2,490mm	13,300	11,600	$\Delta 1,700$
Minimum turning width	6,800mm	16,400	12,800	$\Delta 3,600$

The stelling angle

35°



Max pay road  
21T

### 3-axis steering pole trailer specifications

MODEL : PP 3 2 B 3 K 2 D 1 A S		
Dimensions	L	8,065mm
	W	2,490mm
	H	1,600mm
	l	1,000mm
	w	2,490mm
	h	1,600mm
Vehicle weight	10,270kg	
Max pay load	21,000kg	
GVW	31,270kg	
Tire size	275/80R22.5	
	151/148J	

## WATER-BASED COATING TECHNOLOGIES

We research and development to adopt next-generation water-based paints that are considerate of the local environment and employees. The products exhibited at the Japan Mobility Show 2023 use special paint that changes color depending on the viewing angle and the way the light hits it.



TOHO CAR CORPRATION is the only manufacturer in Japan that consistently designs and manufactures trailer axles, suspensions, and frame bodies, we provides a variety of special purpose vehicles.



### Contact

TOHO CAR CORPRATION TOKYO OFFICE

3-2-43,Shitte,Tsurumi-ku,Yokohama-City,Kanagawa-Prif,230-0003,JAPAN

Phone : +81-45-575-9901

FAX : +81-45-575-5247



**TOHO CAR CORPORATION**

<https://www.shinmaywa.co.jp/toho/>

