

ShinMaywa

TIPPING GEAR

TELESCOPIC CYLINDER TYPE *KC & KE series*

ShinMaywa is widely known as the original manufacturer of "TENTSUKI" dump hoist.

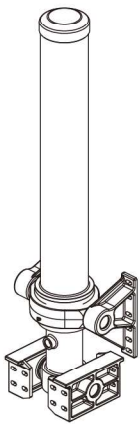


***High Performance & High Durability
Maximize Your Benefit.***

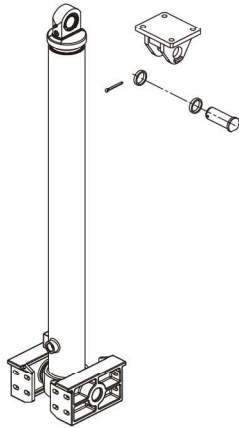
ShinMaywa is a leading manufacturer of special-purpose trucks in Japan.

TELESCOPIC CYLINDER Types

KC Series

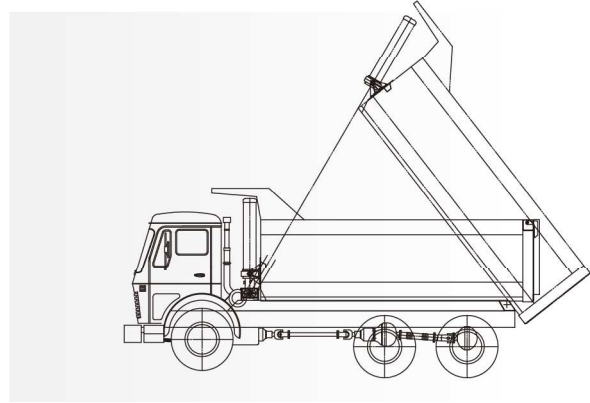


KE Series

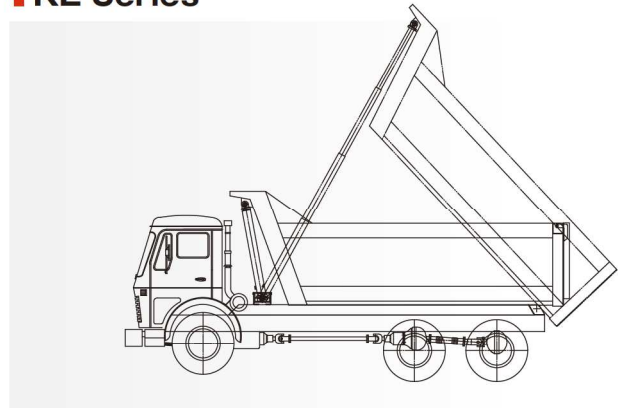


INSTALLATION Example

KC Series



KE Series



CYLINDER Code & Type Description

KC 145 - 3 - 4265 - 0A - FC

1 2 3 4 5 6

- | | |
|----------------------------------|------------------------------|
| 1 Cylinder Type | 4 Total Effective Stroke(mm) |
| 2 Effective Diameter First Stage | 5 Design Code |
| 3 Number of Extensions | 6 Option FC=Plated Tube |

KC : Front-end Cylinder with Outer Cover

KE : Front-end Cylinder with Clevis

Features

1 Japanese Quality

- ▶ Developed and tested in Japan

2 Superb Low-maintainance

- ▶ No accumulation of contamination on top end of tube

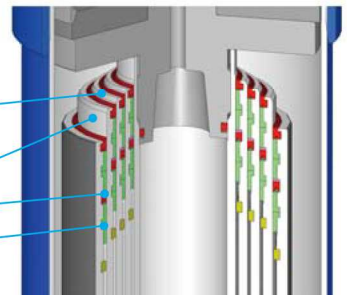
3 Anti Oil Leakage Technology

- ▶ Using NBR (Nitrile rubber) for packing and dust seal
- ▶ Finishing tube surface in exquisite accuracy

Notes This cylinder can be used only for dump trucks (tippers).
Working pressure depends on application.
Never exceed maximum pressure.
Maximum duration of extension is 2 hours.

Close-up of Oil Seals

- Specially Designed NBR Dust Seal
- Exquisitely Smooth Surface of Tube
- NBR Packing
- Resin Bush



Polishing by Centerless Grinder



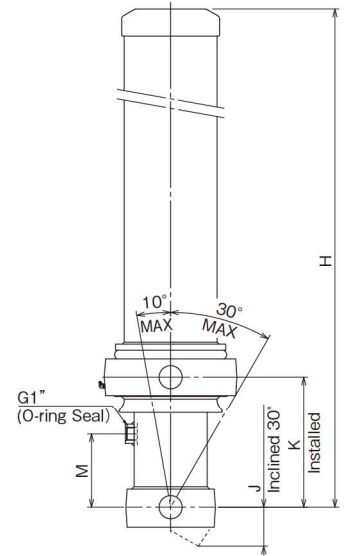
KC Series

Cylinder Performance (approx.)

Cylinder	Designed Maximum Lifting Capacity	Maximum Pressure		Volume of Hydraulic Oil		Maximum Pumping Flow	Maximum Thrust of First Stage	Maximum Cylinder Angle	
				Total Vol.	Working Vol.			Front	Rear
	ton	MPa	bar	L		L/min	ton	deg.	
KC126-3-3893-0A	33-54			46	35	110	26.0		
KC126-3-4283-0A	33-54			51	39				
KC145-3-3875-0A	45-65			64	49	110	34.8		
KC145-3-4265-0A	45-65			71	54				
KC145-4-5182-0A	36-60	20.6	206	69	57	220	35.0	10	30
KC168-4-5158-0A	50-70			94	77				
KC168-5-6465-0A	35-55			100	86	220	40.0		
KC190-4-5132-0A	65-80			125	102				
KC190-5-6433-0A	50-70			133	114				

Cylinder Mechanism, Dimensions and Weight (approx.)

Cylinder	Effective Diameter First Stage	Weight	Number of Extensions	Total Effective Stroke	Oil Inlet	H Installed	J	K Installed	M
	mm					kg	mm	mm	
KC126-3-3893-0A	125.5	197	3	3,893	G1" O-ring Seal	1,654	83	340	190
KC126-3-4283-0A		210	3	4,283		1,784			
KC145-3-3875-0A		245	3	3,875		1,663			
KC145-3-4265-0A	145.2	261	3	4,265	G1" O-ring Seal	1,793	92	340	190
KC145-4-5182-0A		266	4	5,182		1,663			
KC168-4-5158-0A	167.5	313	4	5,158	G1" O-ring Seal	1,668	102	340	190
KC168-5-6465-0A		332	5	6,465		1,668			
KC190-4-5132-0A	190.2	360	4	5,132	G1" O-ring Seal	1,668	108	340	190
KC190-5-6433-0A		385	5	6,433		1,668			



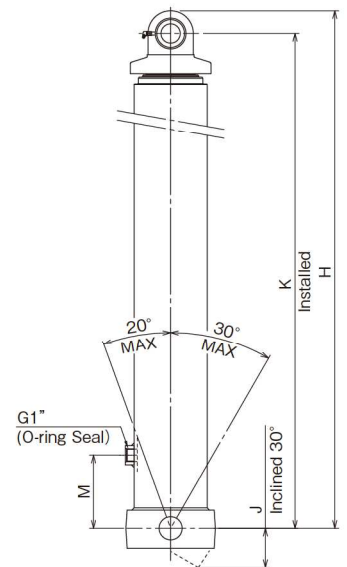
KE Series

Cylinder Performance (approx.)

Cylinder	Designed Maximum Lifting Capacity	Maximum Pressure		Volume of Hydraulic Oil		Maximum Pumping Flow	Maximum Thrust of First Stage	Maximum Cylinder Angle	
				Total Vol.	Working Vol.			Front	Rear
	ton	MPa	bar	L		L/min	ton	deg.	
KE126-3-3893-0A	33-54			46	35	110	26.0		
KE126-3-4283-0A	33-54			51	39				
KE145-3-3875-0A	45-65			64	49	110	34.8		
KE145-3-4265-0A	45-65			71	54				
KE145-4-5182-0A	36-60	20.6	206	69	57	220	35.0	20	30
KE168-4-5158-0A	50-70			94	77				
KE168-5-6465-0A	35-55			100	86	220	40.0		
KE190-4-5132-0A	65-80			125	102				
KE190-5-6433-0A	50-70			133	114				

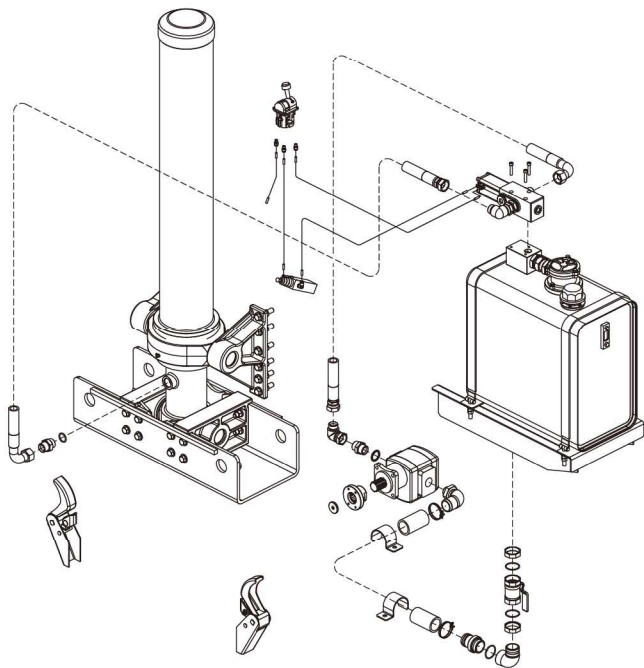
Cylinder Mechanism, Dimensions and Weight (approx.)

Cylinder	Effective Diameter First Stage	Weight	Number of Extensions	Total Effective Stroke	Oil Inlet	H Installed	J	K Installed	M
	mm					kg	mm	mm	
KE126-3-3893-0A	125.5	137	3	3,893	G1" O-ring Seal	1,713	83	1,654	190
KE126-3-4283-0A		148	3	4,283		1,843			
KE145-3-3875-0A		172	3	3,875		1,714			
KE145-3-4265-0A	145.2	185	3	4,265	G1" O-ring Seal	1,844	92	1,785	190
KE145-4-5182-0A		193	4	5,182		1,717			
KE168-4-5158-0A	167.5	230	4	5,158	G1" O-ring Seal	1,719	102	1,660	190
KE168-5-6465-0A		249	5	6,465		1,722			
KE190-4-5132-0A	190.2	272	4	5,132	G1" O-ring Seal	1,713	108	1,654	190
KE190-5-6433-0A		298	5	6,433		1,719			

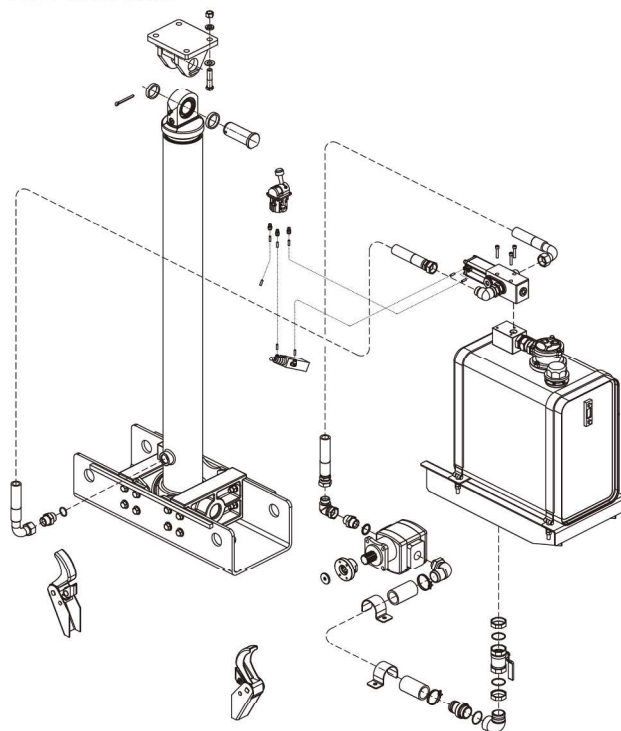


KIT Parts

KC Series



KE Series



Optional Parts are Included in Above Illustrations



Switching Valve



Body Bracket



Operation Lever



Gear Pump



Limit Valve



Body Lock



Base Bracket



Oil Reservoir

Gear Pump Specifications

Rotational Direction	Bidirectional
Displacement Volume	83.7cm ³ /rev
Inlet(Outlet) Port Shape	G1"(BSPP)
Rated Pressure	21MPa
Operating Speed	600 to 2400 min ⁻¹
Shaft	8×32×36(DIN 5462/ISO14)
Flange	ISO 7653

Specifications and dimensions are subject to change without notice.

ShinMaywa Industries, Ltd.

International Sales Dept.
Special Purpose Truck Div.

3-2-43, Shitte, Tsurumi-ku, Yokohama, 230-0003, Japan
Telephone : +81-45-575-5163 Facsimile : +81-45-575-9837
e-mail : overseas@shinmaywa.co.jp

ShinMaywa (Asia) Pte. Ltd.

8 Burn Road, #14-10 Trivex
Singapore 369977
Telephone : +65-6224-0728
Facsimile : +65-6224-9678
e-mail : asia.ad@shinmaywa.com.sg

Thai ShinMaywa Co., Ltd.

No.199, Moo 12, Soi Daramitr (Petchkasem 120),
Petchkasem Road, Om-noi, Krathumbaen,
Samutsakorn 74130 Thailand
Telephone : +66-2-420-4712
Facsimile : +66-2-420-9863
e-mail : tsmc@shinmaywa.co.jp